

Springs Hill Demonstration Garden Plant List
5510 S 123 Bypass, Seguin

Updated as of:2/17/2010

Purpose: The demonstration garden will show the public a colorful Xeriscape of recommended plants for low water use in home landscaping.

A. Shade Garden 30' x 5'

- Columbine
- Holly fern
- American Beauty berry
- Fall Aster

B. Rain Bed 35' x 5'

- Mexican feather grass,
- Lindheimer muhly grass,
- Spiderwort
- rain lilies (seeded)

C. Center Color Garden 30' x 5'

- Indigo spires
- Rock Rose
- Skull cap
- Jerusalem sage
- Mexican Mint
- Mexican Bush sage

D. Sun Border 90' x 5'

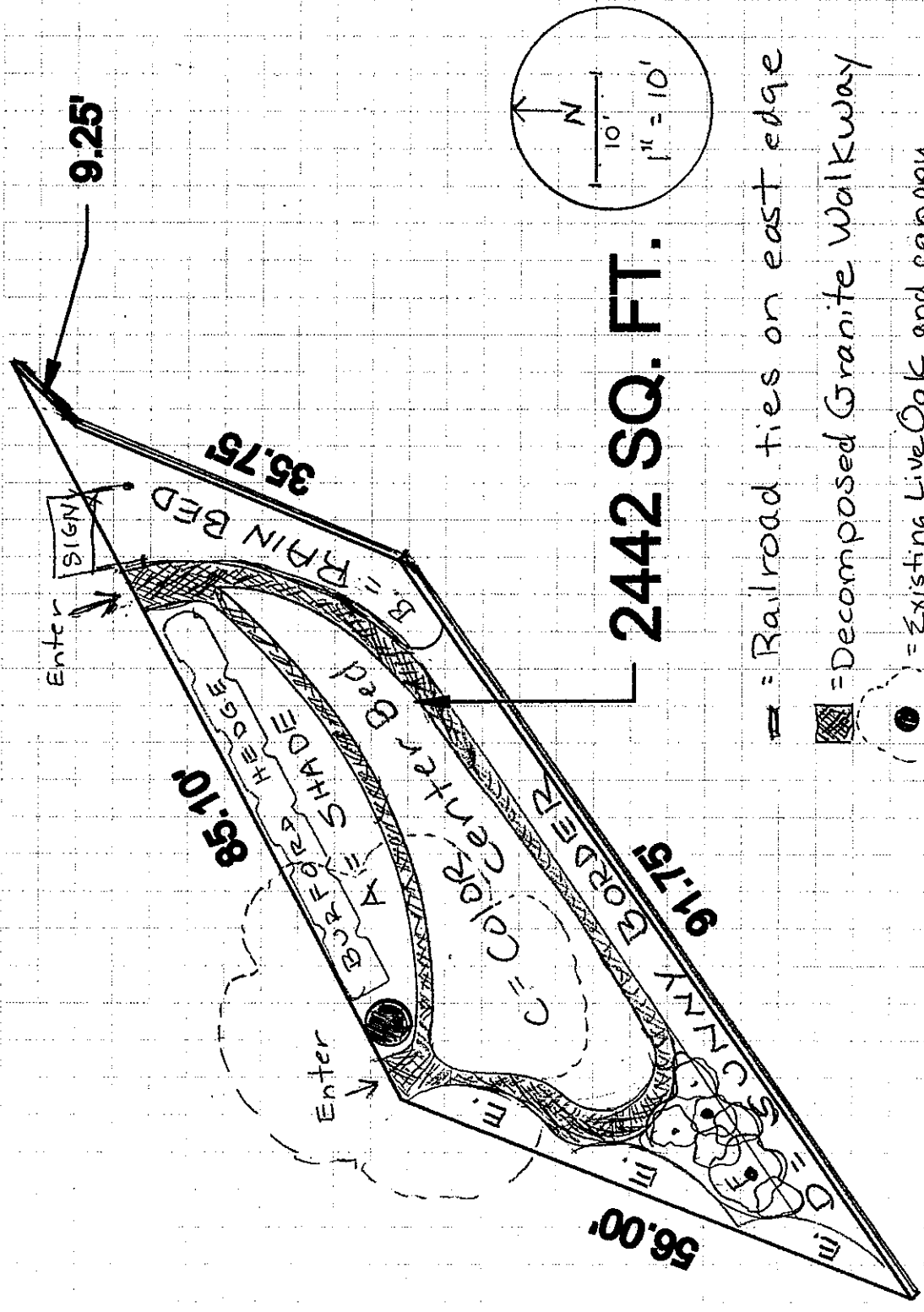
- Red yucca
- Rosemary
- Lavender
- Blackfoot daisy
- Purselane
- Bulbine
- Esperanza

E. Color Edge 50' x 3'

- White Salvia Greggii
- Red Salvia Greggii
- Pink Salvia Greggii

F. Cenizo Bed

- Add more cenizos around existing one and trim
- Trim low suckers off existing crape myrtle.



▬ = Railroad ties on east edge

▨ = Decomposed Granite Walkway

● = Existing Live Oak and canopy

○ = 240' (approx) steel edging